



FLUOROWRAP®

R128 and R129

Engineered for High Performance Insulation

Extruded PTFE Film

FLUOROWRAP® R128 and R129 Extruded PTFE Films are engineered for use as the primary insulation in high temperature wire and cable and wall construction of convoluted hoses. FLUOROWRAP® R128 and R129 are designed for the most demanding applications requiring high performance and tight tolerances while providing excellent dielectric strength, thermal and chemical resistance.

Features/Benefits

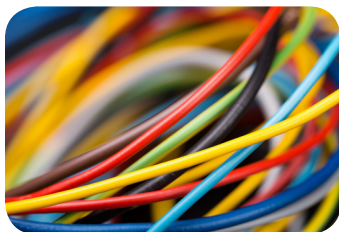
- High dielectric strength
- Outstanding thermal and chemical resistance
- Meets MIL-W-16878/4A, 7139B, MIL-W-22759B and NAS703
- RoHS and REACH compliant

Availability

FLUOROWRAP® R128 is available in white and natural. FLUOROWRAP® R129 is available in a wide range of colors. FLUOROWRAP® R128 and R129 Extruded films are available on industry standard 3" (76 mm) ID cores in-flat pad, traverse wound or StablEdge™ packages. Customized solutions available.

Applications

- Wire and cable insulation for extreme chemical and thermal environments
- Power cable
- Coaxial cable
- Thermocouple wire
- Convoluted hose constructions



FLUOROWRAP® R128 and R129 Properties

Performance tests are run using standard test procedures.
The values presented are typical values and should not be used for specification purposes.

Property	English Units	Metric Units	English Units	Metric Units	English Units	Metric Units	English Units	Metric Units	English Units	Metric Units
Thickness	2.0 mil	0.051 mm	3.0 mil	0.076 mm	4.0 mil	0.102 mm	5.0 mil	0.127 mm	10.0 mil	0.254 mm
Density	1.6 g/cm ³									
Tensile Strength MD (minimum)	2,500 psi	17.2 MPa	2,300 psi	15.8 MPa	2,200 psi	15.2 MPa	1,900 psi	13.1 MPa	1,000 psi	6.9 MPa
Tensile Strength TD (minimum)	250 psi	1.7 MPa	275 psi	1.9 MPa	350 psi	2.4 MPa	350 psi	2.4 MPa	375 psi	2.6 MPa
Elongation MD (minimum)	75 %		125 %		125 %		150 %		300 %	
Approximate Yield	60.2 ft ² /lb	12.3 m ² /kg	40.1 ft ² /lb	8.2 m ² /kg	30.1 ft ² /lb	6.2 m ² /kg	24.1 ft ² /lb	4.9 m ² /kg	12.0 ft ² /lb	2.5 m ² /kg

FLUOROWRAP® and StabEdge™ are registered trademarks.



Saint-Gobain

AMERICAS
Tel: (800) 962-2666
(518) 686-7301

EUROPE
Tel: +44 (0) 1706-746900

ASIA
Tel: (886) 2-2503-4201

www.films.saint-gobain.com

AMERICAS: 14 McCaffrey Street, Hoosick Falls, NY 12090, USA

EUROPE: Bay 3 Transpennine Industrial Estate, Gorrels Way, Rochdale, OL11 2PX, UK

ASIA: Room 302,3F-1, 147 Jianguo North Road, Section 2, Taipei, Taiwan, 104

The data and details in this document were correct and up-to-date at the time of printing and are intended to provide information on our products and their possible applications. It is the user's responsibility to obtain the latest version of the product data sheet. This data sheet is not a specification and does not assure specific product characteristics or make reference to the suitability of the product for a specific application. Because Saint-Gobain cannot anticipate or control every application, we strongly recommend testing of this product under individual application conditions. The application, use and conversion of this product are the user's responsibility.

Limited Warranty: For a period of 6 months from the date of first sale, Saint-Gobain Performance Plastics warrants this product(s) to be free from defects in manufacturing. Our only obligation will be to provide replacement product for any portion proving defective, or at our option, to refund the purchase price thereof. User assumes all other risks, if any, including the risk of injury, loss or damage, whether direct or consequential, arising out of the use, misuse or inability to use this product(s).

SAINT-GOBAIN PERFORMANCE PLASTICS DISCLAIMS ANY AND ALL OTHER WARRANTIES, EXPRESSED OR IMPLIED, INCLUDING THE IMPLIED WARRANTIES OF MERCHANTABILITY AND FITNESS FOR A PARTICULAR PURPOSE.

NOTE: Saint-Gobain Performance Plastics Corporation does not assume any responsibility or liability for any advice furnished by it, or for the performance or results of any installation or use of the product(s) or of any final product into which the product(s) may be incorporated by the purchaser and/or user. The purchaser and/or user should perform their own tests to determine the suitability and fitness of the product(s) for the particular purpose desired in any given situation.

©2017 Saint-Gobain Performance Plastics